



Description

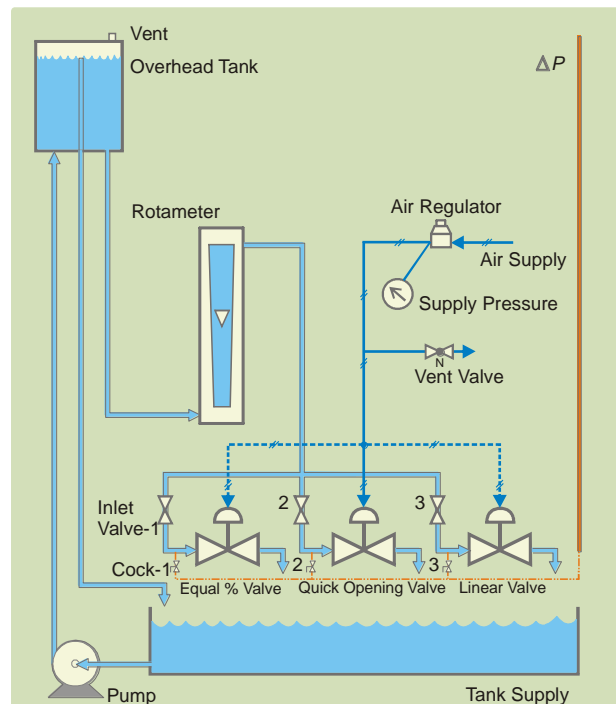
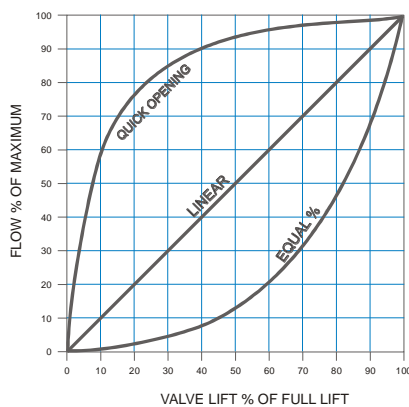
The setup is designed to understand the control valve operation and its flow characteristics. It consists of pneumatic control valves of linear, equal% (& quick opening for product 318B) type, stainless steel water tank with pump for continuous water circulation and rotameter for flow measurement. An arrangement is made to measure pressure at the valve inlet in terms of mm of water. An air regulator and pressure gauge is provided for the control valve actuation. In case of additional optional requirement a valve positioner is fitted on linear valve. The set up is stand-alone type.

Features

- Closed loop water circulation
- MS Excel sample calculation
- Industrial valves

Range of Experiments

- Study of valve flow coefficient
- Study of inherent characteristics
- Study of installed characteristics
- Study of hysteresis of control valve
- Study of rangeability of equal % control valve
- Study of valve positioner



Specification

Product	Control valve characteristics	
Product code	318	318B
Control valve (Linear)	Type: Pneumatic; Size: 1/2", Input: 3–15 psig, Air to open, Characteristics: Linear	
Control valve (equal %)	Type: Pneumatic; Size: 1/2", Input: 3–15 psig, Action: Air to close, Characteristics: Equal %	
Control valve (quick opening)	Not provided	Type: Pneumatic; Size: 1/2", Input: 3–15 psig, Air to open, Characteristics: Quick opening
Rotameter	40-400 LPH	60-600 LPH
Overhead tank	SS304, cylindrical	
Receiving tank	SS304, water reservoir	
Pressure indication	Tube with graduated scale at control valve inlet	
Pump	Fractional horse power, type submersible	
Air Regulator	Range 0-2.5 kg/cm ²	
Pressure gauge	Range 0-2.5 kg/cm ²	
Overall dimensions	735Wx550Dx2020H mm	
Optional	Valve positioner fitted on linear valve Mini Compressor	

Utilities Required

Electric supply

230 +/- 10 VAC, 50 Hz, 1 phase

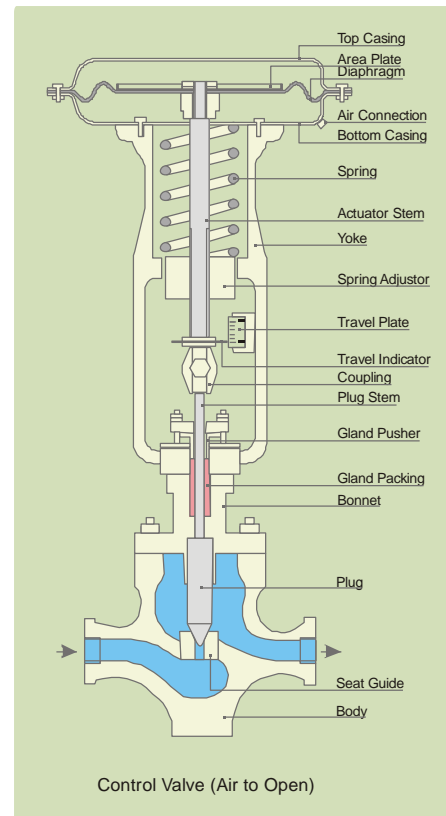
Water supply

Distilled water @16 liters

Air supply

Clean, oil and moisture free air, pressure

2 Bar, consumption 50 LPH



Specifications subject to change without notice

APEX INNOVATIONS PVT. LTD.

E9/1, MIDC, Kupwad, Sangli - 416436 (MS) India Telefax: +91 233 2644098/2644398

Email: support@apexinnovations.co.in Web: www.apexinnovations.co.in